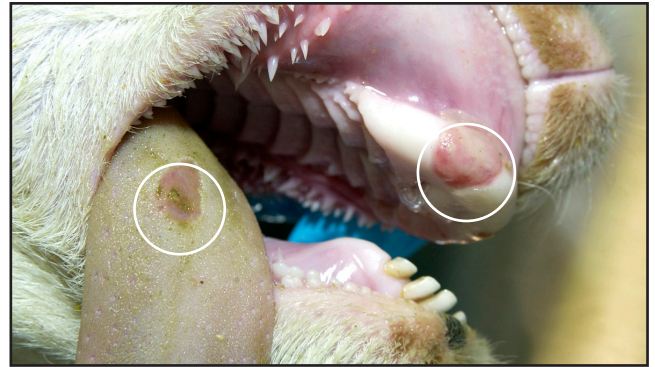


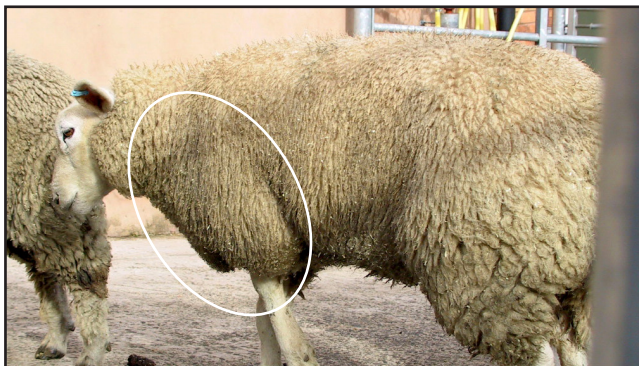
FOOT AND MOUTH DISEASE CAN LOOK LIKE MANY THINGS



FEVER (>104°F, >40°C)¹



**BLISTERS IN MOUTH OR
ON TONGUE²**



LAMENESS³



RED OR WHITE ABOVE THE HOOF²



SUDDEN DEATH IN LAMBS⁴



EATING LESS OR OFF FEED¹

SEE SOMETHING, SAY SOMETHING

State Veterinarian Phone # _____