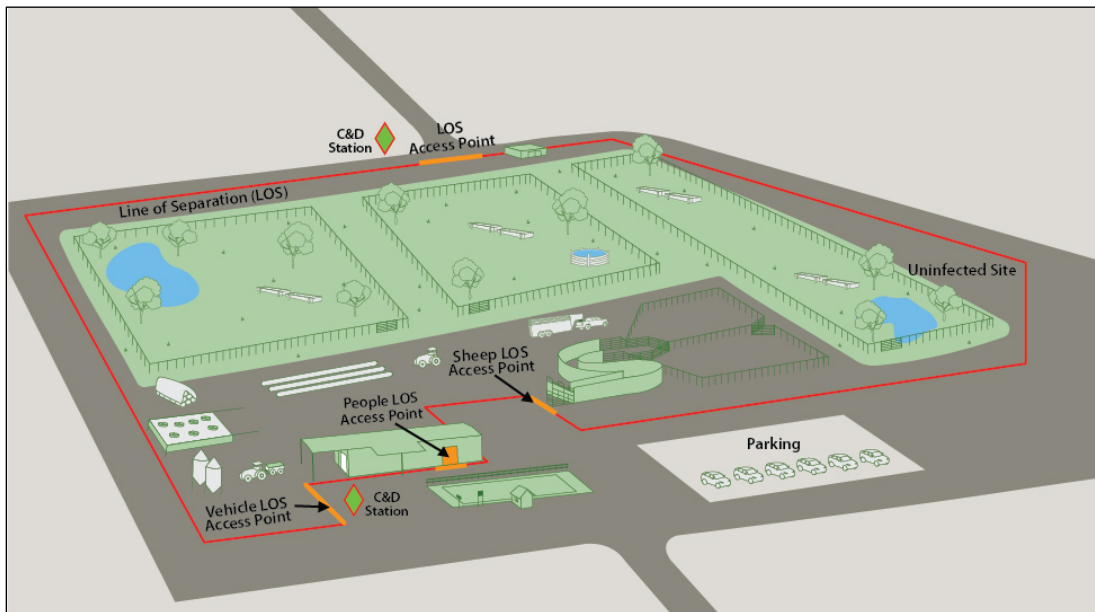


## Line of Separation (LOS) and Animal Load-out/Load-in Examples: Pasture/Rangeland

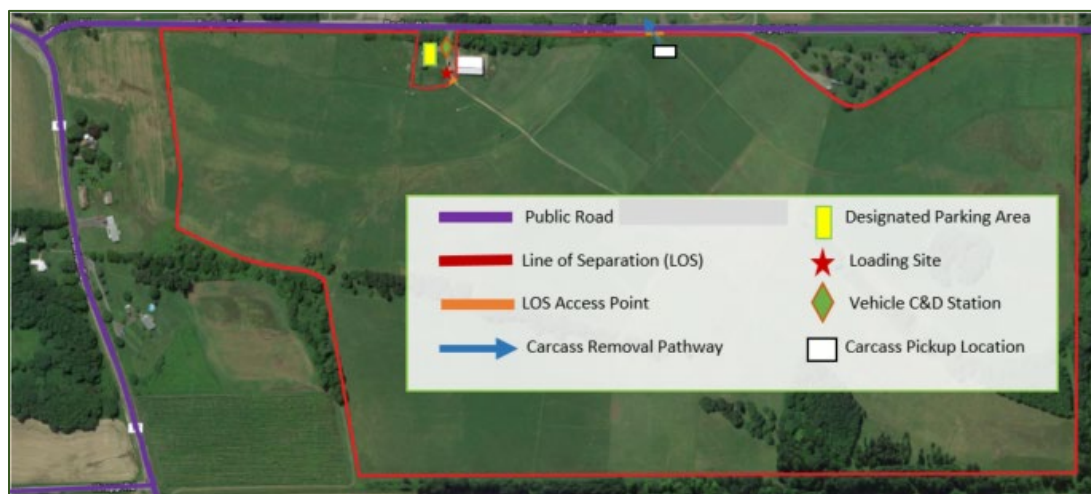
**Figure 1: Illustration of Sheep on Pasture with a Single Animal Load-out/Load-in Area at the Line of Separation (LOS)**

This example demonstrates the layout of an LOS around the perimeter of a pasture which includes two LOS access points for equipment, each with a cleaning and disinfection (C&D) station. There is a separate LOS Access Point for people to enter and a single animal load-out/load-in area that allows the livestock truck/trailer to remain outside the LOS.



Livestock trucks/trailers that remain outside the LOS may not have undergone effective C&D prior to arrival. Effective C&D of livestock trucks/trailers can be challenging if there are not enough commercial truck washes in your area and/or if there are several load-outs needed in a short amount of time. On-farm C&D of livestock trucks/trailers may be difficult due to a lack of water access, inclement weather, and difficulties capturing runoff from the C&D process if required by regulatory agencies.

**Figure 2: Example Pasture with a Single Animal Load-out/Load-in Area at the LOS**

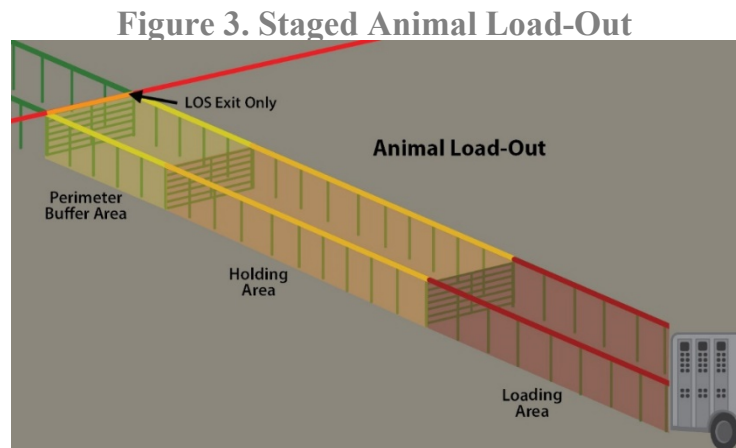


If C&D is not possible, then the livestock truck/trailer **MUST**:

- Not cross the LOS, **AND**
- Not drive close to susceptible animals staying on the operation, **AND**
  - Be destined for a terminal location (slaughter plant),  
- **OR** -
  - Be used **ONLY** for animals originating in the same flock (no commingling or sharing trailers).

If it is not possible to C&D the livestock truck/trailer, then the load-out/load-in area **MUST** be:

- Staged for load-out as shown in Figure 3 to ensure sheep, and personnel moving the sheep, cannot carry contamination from the truck/trailer and the load-out facility back across the LOS,  
- **AND** -
- Made of non-porous materials that can be thoroughly cleaned and disinfected (C&D) under all weather conditions before sheep load-in to prevent potential exposure.  
- **OR** -
- Two separate areas, each dedicated to one task – either animal load-out or load-in – and located at some distance from each other that prevents cross-contamination of vehicles, personnel, equipment, and animal waste.



See the *SSWS Information Manual for FMD Prevention: Sheep Feedlots*, Section 6: Animal Load-out and Load-in for the specific biosecurity steps to load-out/load-in animals.

#### Figure 4: Vehicle Crosses the LOS

This option contains an example of an operation where the load-out/load-in area is within the LOS (red star). This would require a livestock truck to undergo C&D at the LOS Access Point before crossing the LOS to limit FMD virus entry. Livestock truck/trailer, commodity truck, and transporter/driver, cross the LOS Access Point onto the sheep side of the LOS to load/unload sheep or commodities.

- C&D of livestock truck/trailer or commodity truck required prior to crossing the LOS
- Driver must follow biosecurity entry procedures when exiting the cab inside the LOS

